



Swiss product innovation

EN 14240 certificated, int.pat.pend.

**COOLING**

**HEATING**

**FLUX** PANEL

# FLUX PANEL

**+ Efficient Swiss product for ceiling, wall and floor**

## DESCRIPTION:

The **int.pat.pend. FLUXPANEL** is a flat, embedded and large-area component which provides self-supporting construction through its rigid form.

It is certified by the European Norm EN 14240 and is most effective in providing both cooling and heating.

The factory-set PE-X heat exchanger tube is integrated into the component so that the element is ready to install quickly and easily at the construction site.

## FIELDS OF APPLICATION WITHIN BUILDINGS:

Ceiling - Wall - Floor

(in drywall systems / lightweight construction / prefabricated construction / suspended ceilings / metal ceiling)

## OBJECT APPLICATION:

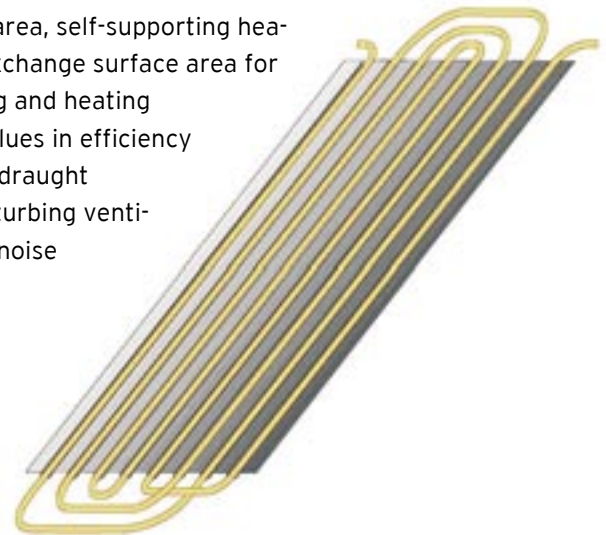
New construction - Refurbishments

## APPLICATIONS:

Residential buildings - Bank buildings - Office buildings -  
Public buildings - Airports - Commercial buildings -  
Industry

## THE FACTS SPEAK FOR THEMSELVES:

- standard is a minimum width of 622 mm and a length of 2.000 mm till 2.500 mm
- low, space-saving installation depth of maximum 50 mm
- available in galvanized steel
- with patented mounting holes
- EN 14240 certificated
- large-area, self-supporting heating exchange surface area for cooling and heating
- key values in efficiency
- no air draught
- no disturbing ventilation noise



FLUXPANEL. Schematic view.



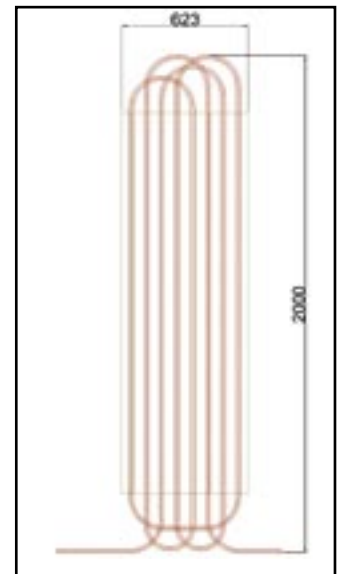
## FIXING BENEFITS

- Self-supporting
- Large-area
- Drywall construction
- Ready-to-assemble elements
- Low installation depth of 50 mm
- Fast assembly by patented mounting holes
- Simple solution to fix elements
- Short assembling times
- For ceiling - wall - floor
- Best price-performance ratio

# Components for Cooling- and Heating

## INFORMATION FOR TECHNIQUE AND MOUNTING:

- Dimension standards: Length 2000 mm / Width 623 mm / Depth 50mm (other sizes available upon request)
- in galvanized finish (other materials upon request)
- Optional with / without patented mounting holes
- Drywall-grid
- Easy to mount on any construction
- Delivered to the construction site, ready to install
- Speedy and simple assembly, no special work assembly troops are necessary
- Easy element connections by coupling systems
- Fast load change
- Also suitable for combined cooling/heating component
- Retrofitting is possible depending on object size
- No glycol or refrigerant inside cooling area
- Conservation of energy by its little delta T compared with air-conditioning
- It functions principally as a closed system
- Manifold connection - similar to floor heating - with zoning capability
- Specifically suitable for refurbishments
- Applicable to alternative energy sources



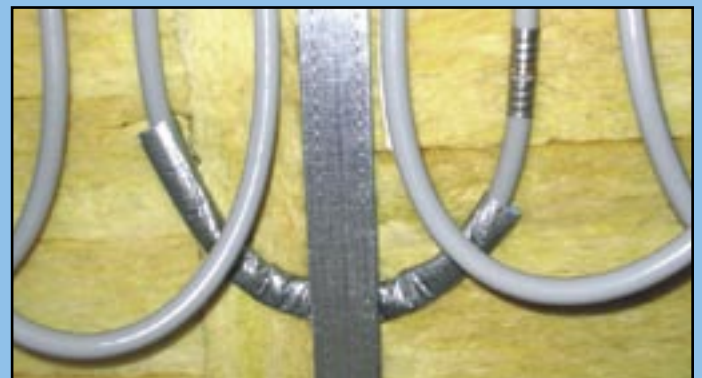
Typ: SAR-KH-2000

### LEFT, SIDE VIEW:

Gypsum cardboard wall on mounted Fluxpanel in insulated modular grid measurement of 625 mm. Basic view without any int.pat.pend details



**SLIDING SLEEVES AND PRESS FITTING SYSTEMS.** Safer, faster as well as an undetachable connection / Manufacturer-independent - according to EN certifications - homologations



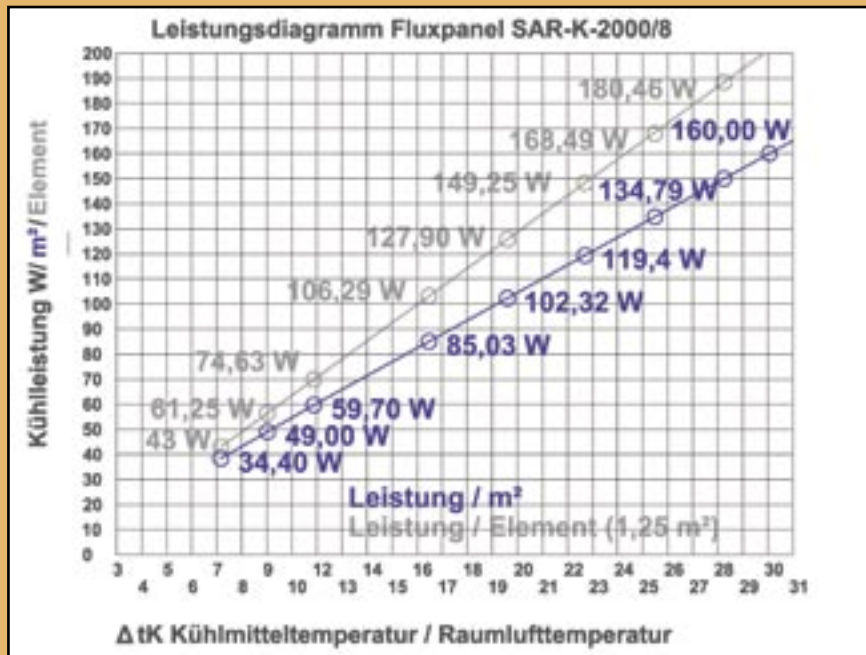
**FLUXPANEL-COMPONENT.** Pressed pipe connection, with cable protection



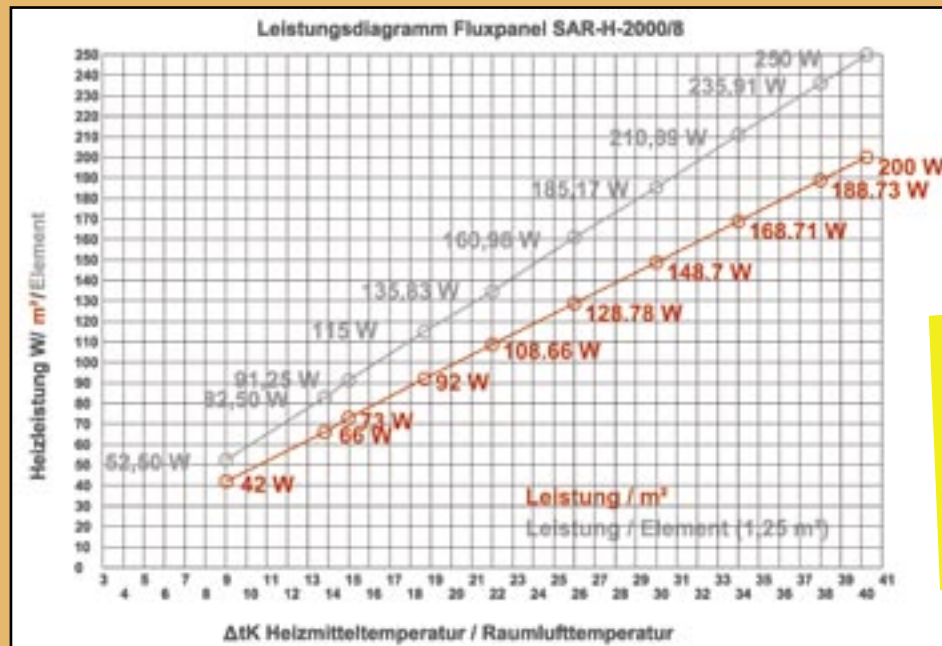
## Cooling

The performance charts for economical cooling and heating by radiation.

- healthy
- comfortable
- economical



Performance charts are calculated values.



## Heating

The natural concept for a healthy and comfortable environment: Regulation of cooling and heating by even radiation of large-area components.

### GENERAL DISTRIBUTION:

INTERFAIR AG

Poststrasse 233  
 FL-9491 Ruggell  
 Tel. ++423-373 22 22  
 Fax ++423-373 22 23  
 interfair@interfair.li  
 www.interfair.li

### OUR PARTNER IN YOUR COUNTRY

